

(1)

((The skull))

The skull consists of twenty-two bones, flat and irregular, which overlap with each other in a way that does not allow movement except the moving mandible.

Bones of a skull

A - cranial bones

Frontal bone

Parietal Bone

Occipital Bone

Temporal bone

Suture

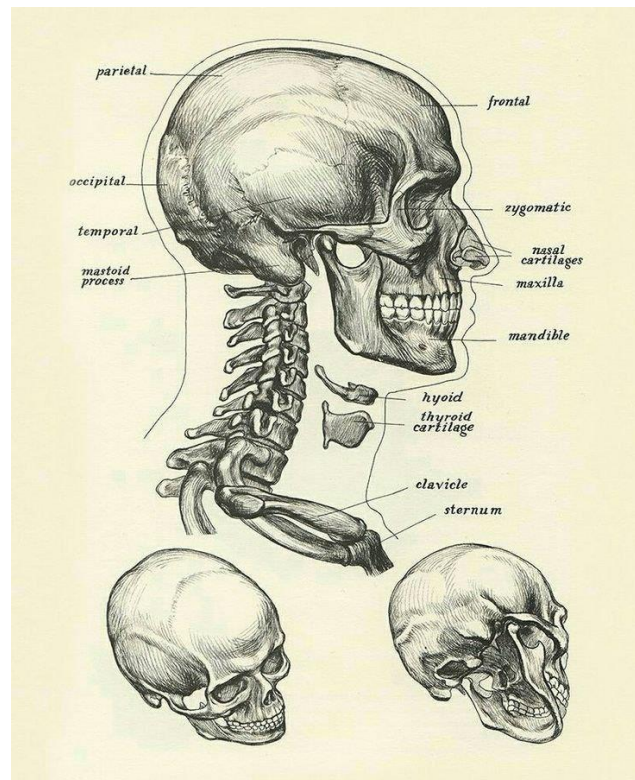
B - facial bones

Nasal bone

Zygomatic bone

Maxilla

Mandible



The head consists of a group of muscles divided into:

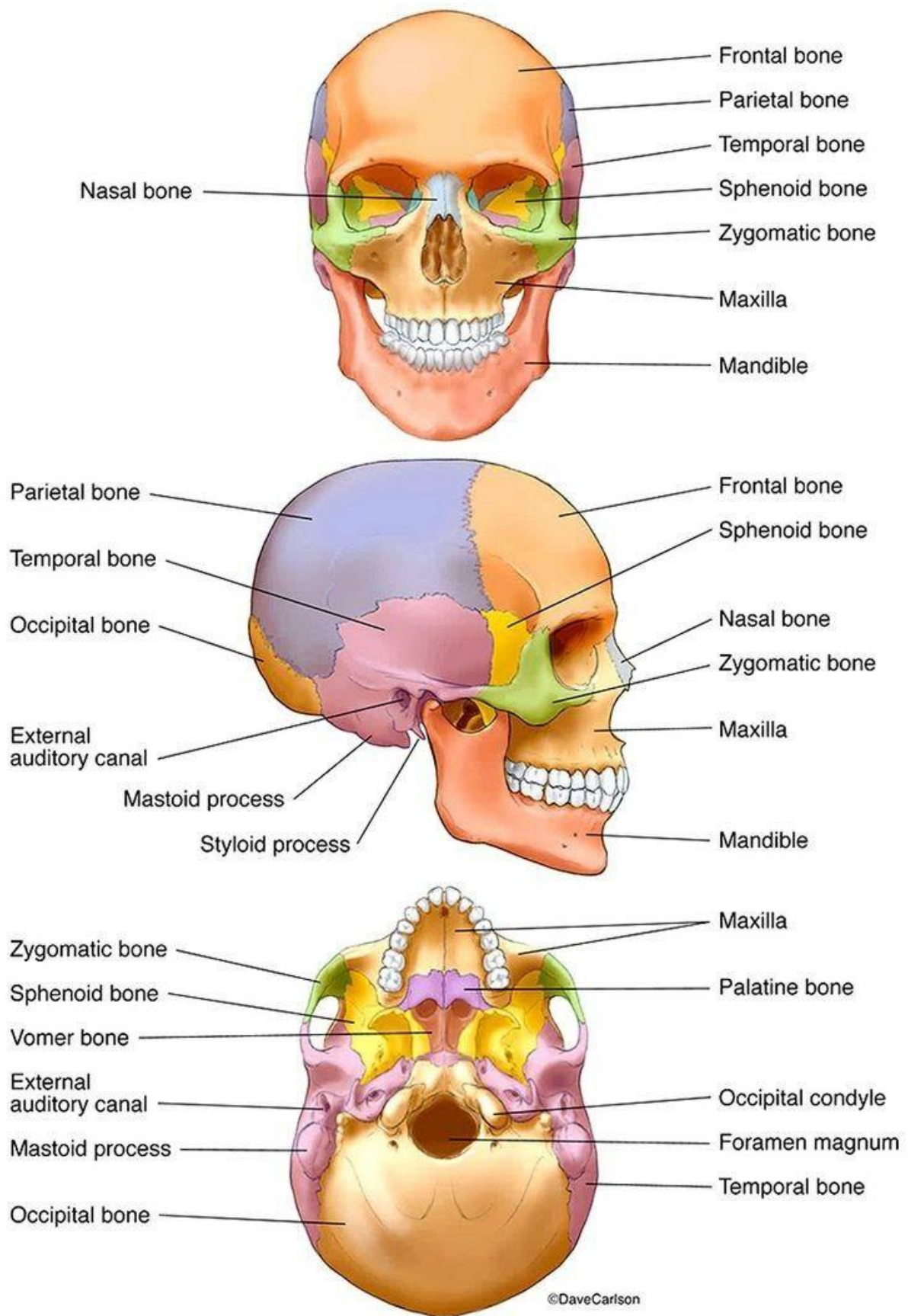
A - chewing muscles..

B - muscles of facial expression..

The chewing muscles consist of:

•**Masseter** : quadriceps muscle forming from the bottom of the zygomatic arch. It moves down and behind the mandible. **Function** : Works to close the mandible. And be visible at the back of the cheek.

Temporalis : Muscle-shaped fan, It is located at the side of the head and passes under the zygomatic bone. **Function** : Working works masseter muscle.



am. Mushtaq Abbas Jassim